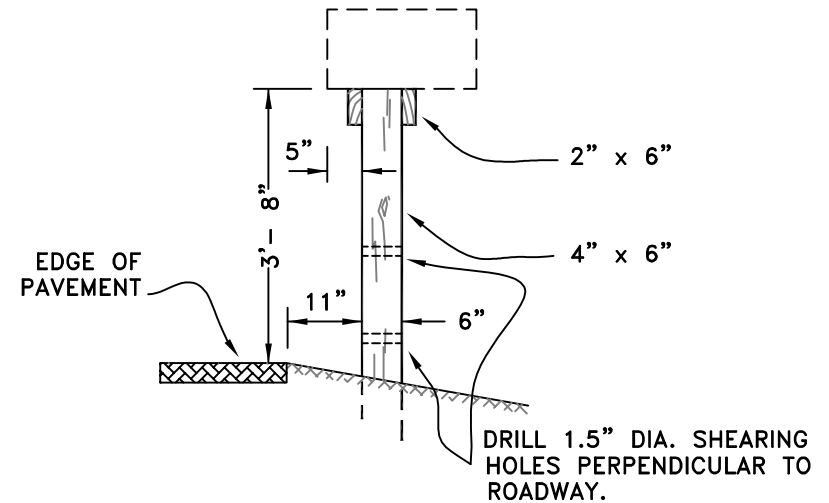
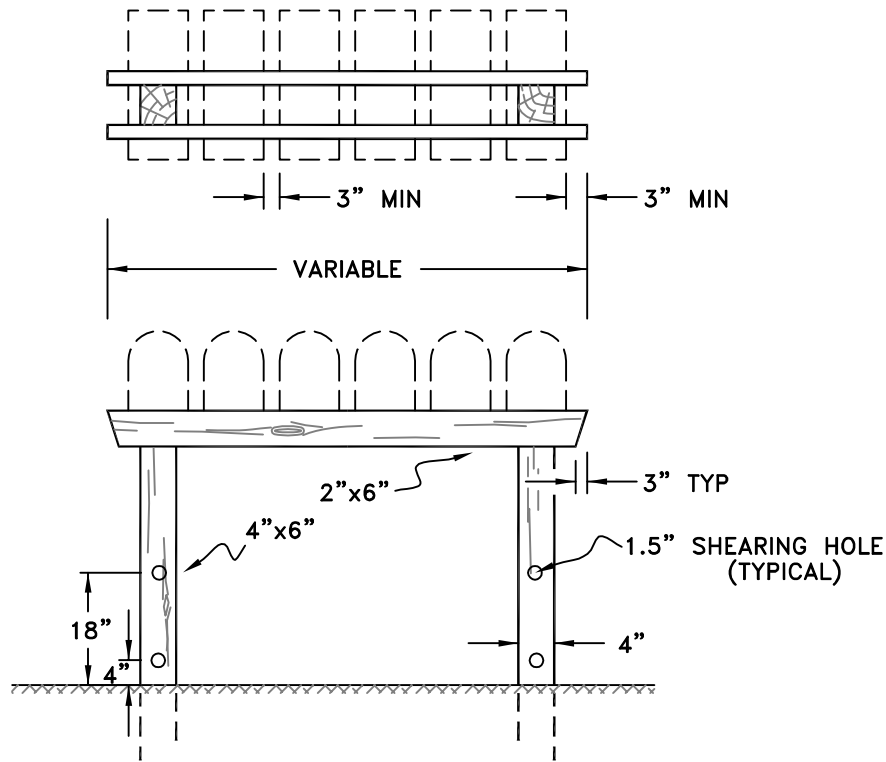


MULTIPLE UNIT 2 POSTS



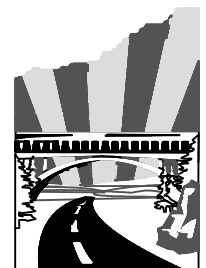
NOTE:

1. ALL LUMBER SHALL BE PRESSURE TREATED DOUGLAS FIR, WESTERN HEMLOCK, OR WESTERN PINE.
2. ALL POSTS TO BE SET AT A MINIMUM OF 24" BELOW SURFACE OF GROUND.
3. TREAT CUT OR DRILLED PRESSURE TREATED LUMBER WITH JASCO TERMIN 8 GREEN PRESERVATIVE OR APPROVED EQUIVALENT.
4. REINSTALL NEWSPAPER BOXES ON NEW MAILBOX POST OR AS DIRECTED.

JACKSON COUNTY ROADS
DALE W. PETRASEK, P.E.
COUNTY ENGINEER

Date	By	Revision
1/2002	TMJ	
03/2003	TCM	added note #4

MAILBOX STAND—MULTIPLE
I:\Engineering\Library\County\English\MailboxMult.dwg
SHEET 1 OF 1 SCALE: NO SCALE



JACKSON COUNTY
Roads