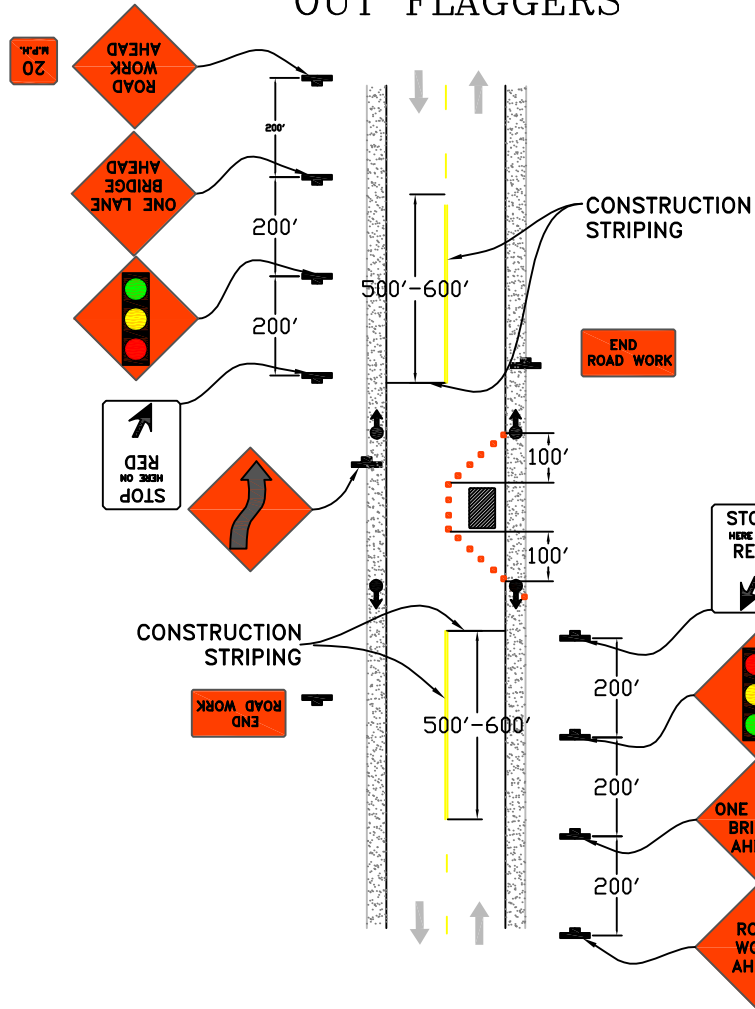


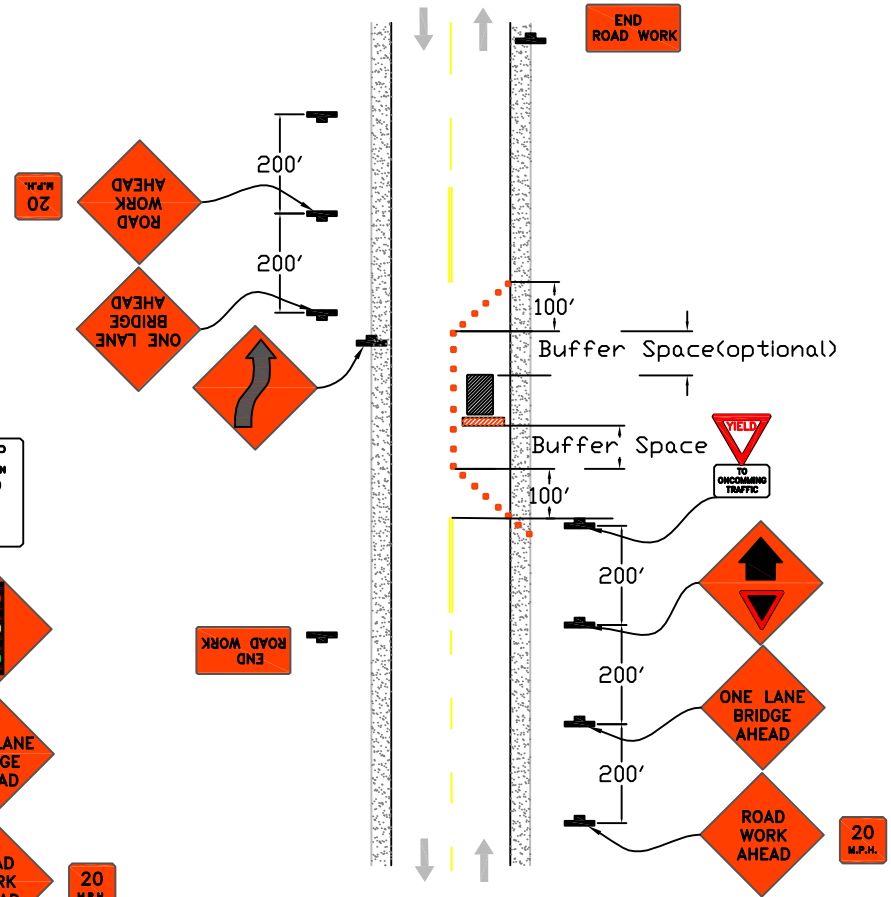
NOTES:

1. SIGNS TO BE POST MOUNTED DURING NON-WORKING HOURS.
2. MINIMIZE BUFFER ZONE TO REDUCE LENGTH OF LANE CLOSURE.
3. YIELD SIGNS AND YIELD AHEAD SIGN TO BE COVERED DURING WORKING HOURS.
4. ADD FLAGGER AHEAD SIGN IN DIRECTION WHICH IS NOT YIELD CONTROLLED DURING WORKING HOURS.

LANE CLOSURE W/ OUT FLAGGERS



LANE CLOSURE WITH FLAGGERS



**JACKSON
COUNTY**
Roads

JACKSON COUNTY ROADS

DALE W. PETRASEK, P.E.
COUNTY ENGINEER

Date	By	Revision
03/2003	TCM	

TRAFFIC CONTROL
LANE CLOSURE ON TWO-LANE BRIDGE

I:\Engineering\Library\County\English\Laneclosure.dwg

SHEET 1 OF 1 SCALE: NO SCALE