



Jackson County Voters' Pamphlet

PRIMARY ELECTION MAY 16, 2006

Dear Jackson County Voters:

The Jackson County Voters' Pamphlet is published to provide a forum for local candidates and issues.

Candidates are not required to be included in the voter's pamphlet. All of the candidate statements included were submitted along with a filing fee. You will find a local measure for the city of Phoenix also included in this pamphlet.

This is a closed party primary election. This simply means that Democrats will be voting for Democrats & non-partisan offices and Republicans will be voting for Republicans & non-partisan offices. The Democrat and Republican parties did not open their primary to non-partisan voters this year. Non-partisan voters will only be voting for non-partisan offices. You will want to be certain of your party status prior to the election. The deadline for changing party affiliation is April 25.

The non-partisan offices of County Clerk and Sheriff will not be on the primary election ballot as there were not enough candidates filed for those positions to warrant a primary election. These two offices will be on the General Election ballot in November.

The May 16, 2006 Primary Election will be conducted by mail. Only the applicable candidates for your precinct will be on your ballot by mail. The office of precinct committee persons must have a minimum of three votes in order to be elected. The deadline to register for this Primary Election is April 25. This pamphlet has been delivered to "post-office mailing addresses." Therefore, the fact that you received a voters' pamphlet does not necessarily mean that you are a registered voter. If you need to register or update your registration, you can find voter registration cards at your local post office, in your phone book, or on our web site at www.jacksoncounty.org under elections. Under federal law all new registrations must be accompanied by proof of identification (information on the requirements is included on the voter registration card form).

If you have any questions regarding the status of your voter registration or the election process, please contact the Elections Center at 774-6148. If you would like to come and see us, we are located at 1101 West Main St., Suite #201, Medford (old Safeway building).

Every vote counts! Ballots must be received by the elections department no later than 8:00 p.m., May 16, 2006 in order to be counted.

Sincerely,

Kathy Beckett

ATTENTION

This is the beginning of your county voters' pamphlet. The county portion of this joint voters' pamphlet is inserted in the center of the state portion. Each page of the county voters' pamphlet is clearly marked with a color bar on the outside edge. All information contained in the county portion of this pamphlet has been assembled and printed by your County Clerk.

This pamphlet produced by:

Kathy Beckett
Jackson County Clerk
1101 W. Main St., Suite #201
Medford, OR 97501

ALPHA INDEX TO VOTERS' PAMPHLET

All candidates were invited to participate in this pamphlet. The following candidates submitted information.

MEASURES

15-64 Annexation of Phoenix City to Rogue Valley Sewer Services 15-3

CANDIDATES

Gilmour, Dave..... 15-6

Prewitt, Craig L. 15-4

Walker, Jack 15-4

Winmill, Tom 15-5

Worden, Carl F..... 15-5

VOTING INSTRUCTIONS 15-7

OFFICIAL DROP SITE LOCATIONS 15-8

CITY OF PHOENIX

Measure No. 15-64

BALLOT TITLE

15-64 ANNEXATION OF PHOENIX CITY TO ROGUE VALLEY SEWER SERVICES (RVS)

QUESTION: Shall the City of Phoenix annex into the service area of Rogue Valley Sewer Services (RVS)?

SUMMARY: RVS is currently providing sewer services to Phoenix by contract. Voters are being asked if the city should become part of RVS to continue this service.

RVS began providing sewer services to Phoenix in July, 2004. Since then, it has:

- Lowered residential rates from \$17.97 to \$16.40 per month (one of the lowest rates in the state);
- Added Water Quality Storm Services at no extra cost;
- Cleaned and inspected all 19 miles of sewer mains, identifying 92 sewer sections needing repair and have fixed 33 sections with the highest priority. And,
- Totally replaced 450 feet of pipe with another 500 feet to be done this spring.

Service rates *will not* be increased as a result of this annexation.

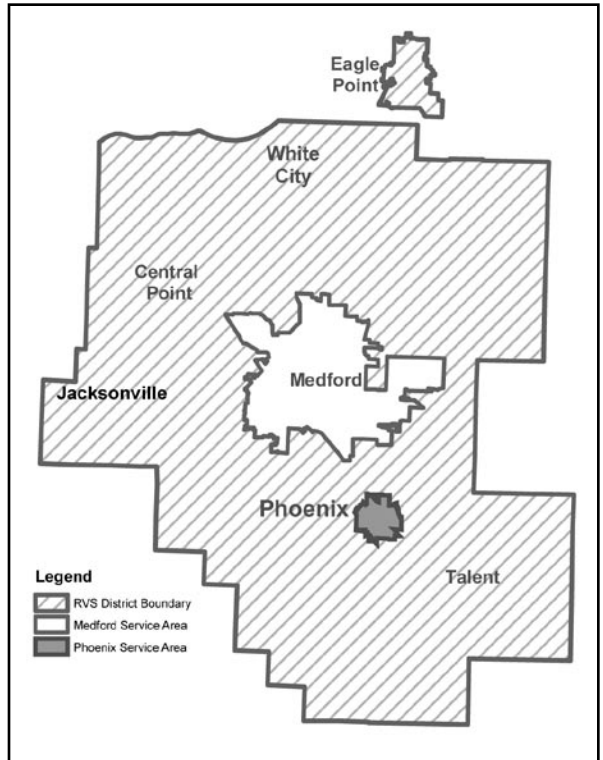
Annexation into RVS was approved by Eagle Point in 1998 by 90%, Central Point in 2000 by 94% and Jacksonville in 2005 by 97% of voters.

Annexation gives Phoenix residents representation in RVS decision making. Phoenix City Council and RVS Board of Directors unanimously adopted resolutions supporting this annexation. A YES vote will continue this partnership.

Annexation into RVS was approved by 90% of Eagle Point voters in 1998, 94% of Central Point voters in 2000 and 97% of Jacksonville voters in 2005.

Sewer rates *will not* increase as a result of this annexation.

(Information furnished by Michael M. Parker, Chairman of RVS Board of Directors.)



MAP OF PROPOSED ANNEXATION

EXPLANATORY STATEMENT

This measure would add the City of Phoenix to the boundaries of Rogue Valley Sewer Services, RVS. As a regional provider of sanitary sewer service, RVS provides service to the cities of Central Point, Eagle Point, Jacksonville, Talent, parts of Medford and much of the unincorporated areas between these cities. RVS is a local government special district, governed by a five member elected Board of Directors.

If this measure is approved, Phoenix residents would be able to vote on RVS measures as well as serve on the Board and other governing committees of RVS.

In 2004, the City Staff recommended to the City Council that sanitary services be provided by RVS. At that time, the City Council unanimously approved such a contract with RVS, planning to ask the voters in a couple years to decide if the City should become a part of RVS via annexation. Earlier this year, the City Council voted to have this election in May of 2006. Again, this vote was unanimous.

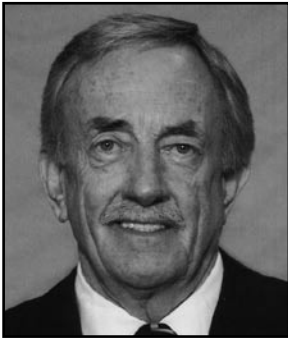
During the last 21 months, RVS has:

- Lowered residential rates from \$17.97 to \$16.40 per month (one of the lowest in the state);
- Added Water Quality Storm Services at no extra cost;
- Cleaned and inspected all 19 miles of sewer mains, identifying 92 sewer sections needing repair and have already fixed 33 sections with the highest priority. And,
- Totally replaced 450 feet of pipe with another 500 feet to be done this spring.

JACKSON COUNTY

COUNTY COMMISSIONER, POSITION #1

COUNTY COMMISSIONER, POSITION #3



JACK WALKER
REPUBLICAN

OCCUPATION: Jackson County Commissioner (position #1)

OCCUPATIONAL BACKGROUND: Trucking Company Rates Clerk, Dispatcher and Terminal Manager, owned Auto Parts and Driveline Service Business 22 years and retired, now 11 years as Commissioner.

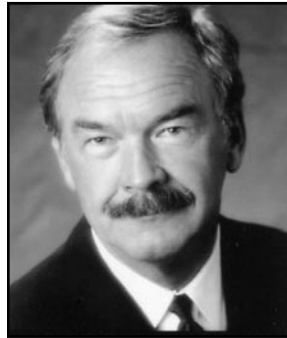
EDUCATIONAL BACKGROUND: Graduated Talent High School 1958, received training in the (Intrastate & Interstate Willamette Tariff, Portland 1966.

PRIOR GOVERNMENTAL EXPERIENCE: Phoenix City Council 1983-1986, Jackson County Commissioner January 1995-2006, Chair of the Association Of Oregon Counties District #4 5 years, served 8 years as the AOC Legislative Representative for Jackson County Board, 10 years as Board Member for the Medford Center, have served to Represented Jackson County on the SORC Executive Board for 8 years.

I want to share with you some of what I have accomplished and give you some specifics for future goals. We have created a new Land Development Ordinance package that should simplify and reduce some land use regulations in Jackson County. With the passing of Measure 37, of which I supported in the voters pamphlet, We can return your property rights lost in the past. I will continue to support the economic endeavors to keep Jackson County financially strong and still a place we wish to live. With the help of our County Urban Renewal projects such as the Amys Kitchen Plant and others that have received incentives for locating here, we can continue to provide good family wage jobs in the future. I am especially proud of my efforts and success in preserving and upgrading the Federal Air Tanker Base at the Medford Jackson County Airport. I shudder to think of the additional damage the Biscuit Fire and other fires would have caused had the Tanker Base been relocated as proposed by the U.S. Forest Service. I pledge my best efforts to prevent any removal of the Elk Creek Dam and work towards it's completion. We can no longer allow extremist views from protecting us from expensive flood damage.

(Information furnished by Jack Walker.)

The above information has not been verified for accuracy by the county.



CRAIG L. PREWITT
REPUBLICAN

OCCUPATION: Associate, Orthopedic Implant Sales
Hay Farmer

OCCUPATIONAL BACKGROUND:
Several sales and management positions within the field of medical products distribution

EDUCATIONAL BACKGROUND:
Medford Senior High School
Oregon State University, BS

PRIOR GOVERNMENTAL EXPERIENCE:
Chairman, Phoenix-Talent School District
Vice President, Oregon School Boards Association
Chairman, OSBA Health Insurance Trust
Phoenix-Talent School District Budget Committee
Phoenix-Talent Strategic Planning Committee
Member, Jackson County Public Safety Coordinating Council

For nearly fourteen years, it has been a privilege serving the Phoenix-Talent School District as a board member. I now hope to expand that role of community service by serving as a Jackson County Commissioner.

Like school board service, county government is the most pure form of government. The Jackson County Commissioners have direct impact on how we live our lives by affecting our area's roads, public health and safety, parks, and recreation.

I believe that the next few years are critical to our county. We are experiencing rapid growth and our area needs full-time commissioners who will work hard to make Jackson County a better place to live.

My wife and I were raised in southern Oregon and we returned here to raise our three children. Jackson County is a great place to live and to raise a family. Please give me the opportunity to work for you while we make Jackson County the envy of the rest of Oregon.

(Information furnished by Craig L. Prewitt.)

The above information has not been verified for accuracy by the county.

JACKSON COUNTY

COUNTY COMMISSIONER, POSITION #1

COUNTY COMMISSIONER, POSITION #1

NO
PICTURE
SUBMITTED

TOM WINMILL
DEMOCRAT



CARL F. WORDEN
DEMOCRAT

OCCUPATION: Sales and Marketing Manager, COBI Digital HD Studios, 2002 to present.

OCCUPATIONAL BACKGROUND: Vintage Inn Restaurant, co-owner 1974-1979; Redwood Station Lumber Yard co-owner 1981-1986; Station Enterprises, President 1984-2002.

EDUCATIONAL BACKGROUND: California State University, Hayward; Seattle University

PRIOR GOVERNMENTAL EXPERIENCE: None.

Community Service: Board of Directors, SOU Raider Club, the athletic arm of the SOU Foundation

"For 28 years Tom Winmill has successfully owned and managed small businesses in southern Oregon. His accomplishments are due in part to his broad and far-reaching talents but in larger measure to his integrity and honesty. Tom will be a breath of fresh air in county government. **David Taub, Chateaulin Restaurant**

"Now more than ever, government on all levels needs leadership. Tom Winmill is smart, thoughtful, honest and hardworking—exactly the kind of leader we deserve." **Doug Snider, Architect**

"I have hope for local government when someone like Tom Winmill is willing to jump in and help. Tom knows business: Making payroll, balancing budgets, handling disputes and dealing with the public in a fair and respectful way. He would make an excellent county commissioner." **Ross Rampy, Par Mortgage Inc.**

Committed to Improving Our Quality of Life by:

- Prudent and inclusive land-use planning
- Strengthening our local economy with family-wage jobs
- Protecting healthcare and county law-enforcement services
- Supporting programs that maintain water and air quality

Please Join Us in supporting Tom Winmill:

Amy Amrhein, Ashland; John and Beth Hallett, Medford; Guadalupe McHenry, Central Point

"We must re-examine how we're conducting the business of county government. It's time for leaders who do not place themselves above the law and it's time for leaders who play by the rules. **Tom Winmill**

(Information furnished by Tom Winmill.)

The above information has not been verified for accuracy by the county.

OCCUPATION: Retired

OCCUPATIONAL BACKGROUND: 31 years Financial Services, Employee Benefits Prior to that, 6 years National Sales Mgr for Circus Vargas.

EDUCATIONAL BACKGROUND: Gunn High School, Graduated Palo Alto, CA

PRIOR GOVERNMENTAL EXPERIENCE: None

Jackson County is currently dependent on federal government grants and other forms of federal welfare to sustain basic county services. Our economy is largely based on a service industry of medical care. Speaking as a financial professional, that is an unacceptable, vulnerable position to be in if the national economy goes south. We must prepare Jackson County for that eventuality.

Jackson County is an untapped gold mine for outdoor recreation, and I will bring my expertise to turn this county into a national and international tourist vacation Mecca for outdoor enthusiasts worldwide.

Jackson County is being run by a tax-and-spend mentality. I intend to turn Jackson County operations into a lean, money-making machine. We don't need to raise property taxes and other fees; we need to run Jackson County like any other profit-minded business.

I will do this by:

1. Working with local Tribes to build a gaming casino off Highway 5, and;
2. Working with local business leaders to establish a national and international tourism advertising campaign to bring massive amounts of tourism dollars into this county, and;
3. Attract out-source-proof, environmentally clean businesses to Jackson County to substantially increase employment and thereby increase the standard of living here.
4. We need to complete Elk Creek Dam to ensure water for our county.

We have highly over-paid county administrators, while our public employees are some of the lowest-paid in the state. We get what we pay for.

Working together with local business leaders, we can make Jackson County financially independent again. The future is in our hands if we choose to grasp it, and we can do it without harming this pristine environment we all enjoy here.

Carl Worden Election Fund
P.O. Box 1173
Eagle Point, OR 97524
(541) 826-6528
wolfeyes@hisurfer.net

(Information furnished by Carl F. Worden.)

The above information has not been verified for accuracy by the county.

JACKSON COUNTY

COUNTY COMMISSIONER, POSITION #3



DAVE GILMOUR

DEMOCRAT

OCCUPATION: Jackson County Commissioner, Position 3
Family Physician, Providence Medical Group, Central Point

OCCUPATIONAL BACKGROUND: Jackson County Health Officer, 1987-2002
Commissioned Officer, USPHS, Gallup, NM, 1977-79
Peace Corps Volunteer and Physician, Apia, Western Samoa, 1975-77
Research Assistant, Haile Sellasie I University/Penn. State University, Addis Ababa, Ethiopia, 1973-74

EDUCATIONAL BACKGROUND:
Dartmouth College, B.A. (Anthropology), cum laude, 1970
Pennsylvania State University, School of Medicine, M.D., 1974
Case-Western Reserve University, Babies and Children's Hospital, Internship, Pediatrics, 1974-75
University of Hawaii, Kaiser Foundation Hospital, Residency, Family Practice, 1979-81

PRIOR GOVERNMENTAL EXPERIENCE:
Central Point Planning Commission, 1987-90
Central Point District #6 School Board, 1990-99
Central Point City Council, 1999-2002
Jackson County Board of Commissioners, Position #3, 2002-present

Dr. Dave Gilmour- Your Commissioner

Driven by a vision of the future:

Can we protect and improve the quality of our lives while absorbing the inevitable growth on our population? This will be the challenge of our future in Jackson County. Can we maintain healthy, safe and thriving communities if our urban areas are polluted and tarnished by gridlock and sprawl? Can we maintain essential public services and quality schools if our young working families can not find decent, affordable housing and jobs that pay a living wage? We can not ignore these questions if we hope to make good long term decisions about our future.

Committed to treating the public with respect:

In an open and free society, citizens may disagree on many issues. It is the responsibility of an elected official to encourage diversity of thought and to treat all citizens with respect.

Committed to stewardship:

Our legacy to future generations should include clean water, clean air, and a natural environment that is better than the one we inherited.

Committed to service:

Just as our best physicians, teachers, and ministers view their services as callings, so should the best of our elected officials. Every decision should be couched in a sense of what is ethical and right.

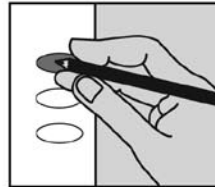
(Information furnished by Dave Gilmour.)

The above information has not been verified for accuracy by the county.

CHECK YOUR BALLOT

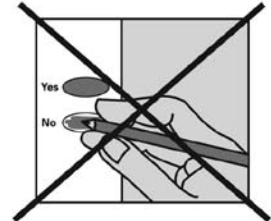
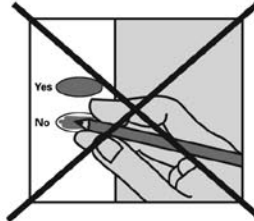
check your ballot!

Make sure you have completely filled in the ovals next to your choices.



If you vote for more candidates than allowed, or if you vote **both Yes and No** on a measure, it is called an overvote.

Your vote **will not count** for that candidate or measure.



You do not have to vote on all contests. Those you do vote on will still count.

Contact Jackson County Elections to request a replacement ballot if:

- you make a mistake
- your ballot is damaged or spoiled
- your ballot is lost

or for any other reason.

Jackson County Elections

1101 W Main Street Suite 201
Medford OR 97501

541 774 6148

www.co.jackson.or.us

VOTING INSTRUCTIONS

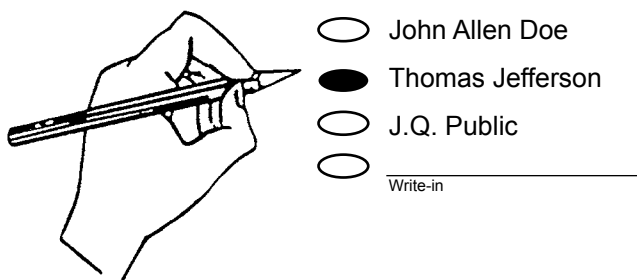
YOU MAY USE PEN (BLACK OR BLUE INK) OR PENCIL

At the Primary Election of 2006 the voters of Jackson County will cast their votes on the ballot illustrated below. This page has been inserted into the Voters' Pamphlet as an aid for using this ballot.

- 1. TO ENSURE YOUR VOTE COUNTS, COMPLETELY FILL IN THE OVAL (●) TO THE LEFT OF THE RESPONSE OF YOUR CHOICE.**
- 2. TO WRITE IN A NAME — WRITE THE NAME ON THE SOLID LINE AND FILL IN THE OVAL (●) TO THE LEFT OF THE WRITE IN LINE.**

EXAMPLE

PRESIDENT (VOTE FOR ONE)



- 3. DO NOT CROSS OUT — IF YOU CHANGE YOUR MIND, CONTACT THE ELECTIONS DEPARTMENT AT 774-6148 FOR A REPLACEMENT BALLOT.**

**REMEMBER, IF STATED ON YOUR BALLOT,
VOTE BOTH SIDES OF YOUR BALLOT!**

OFFICIAL DROP SITE LOCATIONS

OPENING MAY 8, 2006

Jackson County Elections

1101 W. Main St., Suite 201
Medford, OR 97501
Curbside ballot drop box open 24 hours daily
(Left lane – W Main)
Elections office open 8 am to 4 pm
(7 am - 8 pm on Election day)

Ashland Library

410 Siskiyou Blvd.
Ashland, OR 97520
Curbside ballot drop box open 24 hours daily
(alley off Gresham St. by book drop) - opening
May 8, 2006
Closes at 8 pm Election day

Central Point Library

116 S. Third St.
Central Point, OR 97502
Mon Thurs 11-7; Tues Wed 10-5; Fri 12-5
Election day – 10-8

Eagle Point Library

239 W Main St.
Eagle Point, OR 97524
Tues Wed Thurs 10-6; Fri 12-6; Sat 10-6
Election day – 10-8

Gold Hill Library

202 Dardanelles St.
Gold Hill, OR 97525
Mon Thurs 11-6; Tues Fri 1-5; Wed 11-7
Election day – noon-8

Jacksonville Library

340 W. "C" St.
Jacksonville, OR 97530
Mon Fri 12-5; Tues Thurs 12-6; Wed 11-5;
Sat 10-2
Election day – noon-8

Phoenix Library

110 W. Second St.
Phoenix, OR 97535
Mon Wed 1-7; Tues Thurs 10-5; Fri 1-5
Election day – 10-8

Rogue River Library

412 E Main St.
Rogue River, OR 97537
Mon Wed Thurs 10-6; Tues 10-7; Fri 12-5;
Sat 12-4
Election day – 10-8

Shady Cove Library

22225 Hwy. 62 (temp. location)
Shady Cove, OR 97539
Tues 10-5; Wed 10-7; Thurs 10-2; Fri Sat 12-5
Election day – 10-8

Talent Library

105 N. "I" St.
Talent, OR 97540
Mon Wed 10-5; Tues Fri 12-5; Thurs 1-7
Election day – noon-8

White City Library

3143 Avenue C
White City, OR 97503
Mon 10-5; Tues 11-5; Wed 11-7; Thurs 12-5;
Fri 1-5; Sat 10-4
Election day – 11-8

DEADLINE TO RECEIVE BALLOTS: 8 P.M. ELECTION DAY, MAY 16, 2006