



# Jackson County Voters' Pamphlet

## SPECIAL ELECTION March 11, 2008

### JACKSON COUNTY FIRE DISTRICT NO. 5

### Measure No. 15-81

#### BALLOT TITLE

#### **15-81 ANNEXATION OF PHOENIX TO JACKSON COUNTY FIRE DISTRICT 5**

**QUESTION:** Shall Jackson County Fire District 5 annex the City of Phoenix into the District's boundaries effective July 1, 2008?

**SUMMARY:** The Board of Directors of Jackson County Fire District 5 ("District") has determined that fire suppression, emergency medical services, fire prevention, public education and hazardous materials response can be provided efficiently to the City of Phoenix ("City") by the District.

The governing bodies of the City and District have both unanimously approved resolutions calling for an election within both the City and the District on the question of annexation of the City to the District effective July 1, 2008.

There will be no increase in cost to District patrons if the annexation is approved. The current permanent tax rate, which may not exceed \$3.1976 per one thousand dollars of assessed value on improved property, will not change as a result of the annexation.

#### EXPLANATORY STATEMENT

##### **BACKGROUND**

Since the 1960's Phoenix Fire Department and Jackson County Fire District 5 have worked side by side to provide fire protection and emergency medical services to their respective customers. Although each department has done an excellent job, the two departments are duplicating efforts in many areas such as administration, training, fire prevention, public education and emergency response. Additionally, due to budget constraints and increased costs of providing quality emergency services, each agency has been looking at creative ways of becoming more cost effective and operationally efficient.

Since October 1, 2007, Jackson County Fire District 5 has been providing fire protection and emergency medical services to the City of Phoenix on a contract basis. The contract has been very successful in terms of maintaining staffing levels, providing services, reducing costs, cost avoidance and reducing duplication of effort and services for both departments.

Contracting for services and ultimately annexation of fire and

emergency medical services to a neighboring department is not new and has proven to be cost effective in numerous regions of the United States including Oregon, California and Washington. In fact, in Jackson County during the past ten years many small cities have successfully accomplished annexation to local fire districts.

Discussions have been ongoing for years regarding whether Fire District 5 and Phoenix Fire Department should become one fire department. Finally, after establishing the contract for service (effective through June 30, 2008,) the Phoenix City Council and Board of Directors of Fire District 5 have called for an election on the issue. In order for the annexation to occur, voters in both the City and the Fire District must approve the measure.

Today, including the fire and emergency medical services contract with the City of Phoenix, Fire District 5 has grown to over 115 square miles and provides fire and life safety services for approximately 22,000 people in South Jackson County. Fire District 5 responds to approximately 2,100 calls per year out of three stations and employs twenty-eight full-time firefighters and fifty volunteer firefighters.

##### **ANNEXATION OBJECTIVES**

- Provide 24-hour Fire Protection and Emergency Medical Services for the City and the Fire District
- Provide Long-Term Financial Stability
- Eliminate Duplication of Services
- Improve Services and Reduce Costs

##### **SERVICES PROVIDED, COSTS**

The annexation of the City of Phoenix into the jurisdictional boundaries of Jackson County Fire District 5 will enable Phoenix residents to continue to receive twenty-four (24) hour fire and life safety services effective July 1, 2008. Fire District 5 will provide fire prevention, public education, code enforcement, fire suppression, hazardous materials response and emergency medical services for both City and rural residents. There will be no increase in cost to District residents; the tax rate will not exceed \$3.1976 per one thousand dollars of assessed value on improved property. For example, a home assessed at \$150,000 would cost a homeowner \$596.40 per year.

*(Information furnished by Dan Marshall, Fire Chief,  
Jackson County Fire District 5.)*

— CONTINUES —

# JACKSON COUNTY FIRE DISTRICT NO. 5

## Measure No. 15-81

### ARGUMENT IN FAVOR

Ballot Measure #15-81 is a “win-win” proposition. The annexation of the City of Phoenix into Fire District 5 is good for both the city and fire district residents. Annexation will allow the City of Phoenix residents to continue to receive twenty-four (24) hour fire protection and emergency medical services at an affordable price without compromising protection of current Fire District 5 customers. In fact, annexation will bolster and strengthen service levels for the city and the fire district.

The annexation of the City of Phoenix accomplishes several objectives and offers improved service, cost savings, and cost avoidance for both organizations. The City of Phoenix and Fire District 5 customers will realize the benefits for years to come. Listed below are solid and practical reasons why you should Vote Yes on Ballot Measure #15-81:

- ✓ Annexation will provide a broader tax base, ultimately reducing costs.

- ✓ Annexation will not compromise service levels of Fire District 5 customers.
- ✓ Annexation will enhance fire protection and emergency medical services by providing additional resources such as people, equipment and fire station at no additional costs to fire district customers.

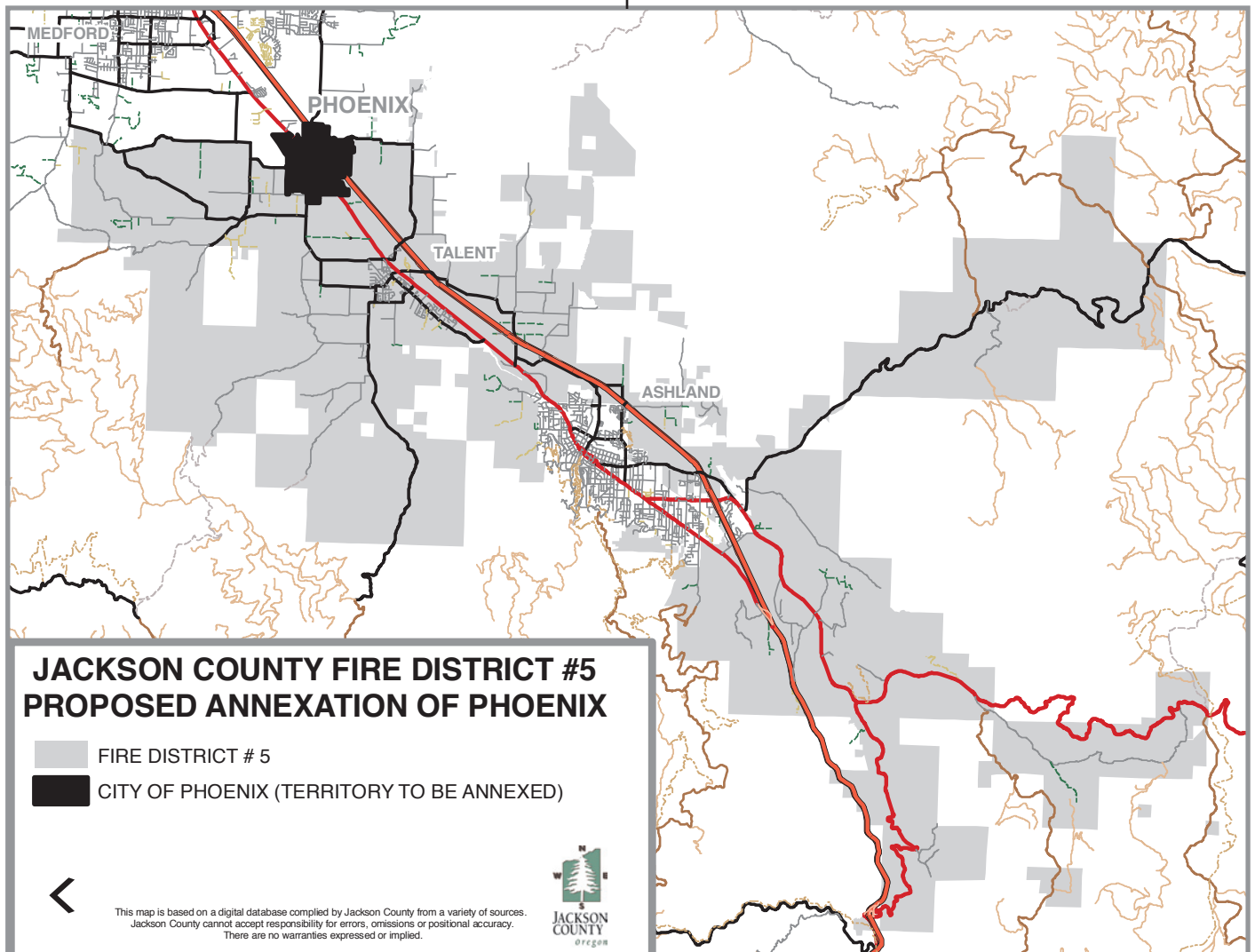
Please join us in supporting Fire District 5 and the City of Phoenix, Vote Yes on Ballot Measure #15-81.

*(Information furnished by Nick Baalman,  
Citizens Connection Committee.)*

### ARGUMENT AGAINST

NONE FILED

The printing of this argument does not constitute an endorsement by the County of Jackson, nor does the county warrant the accuracy or truth of any statement made in the argument.



# VOTING INSTRUCTIONS

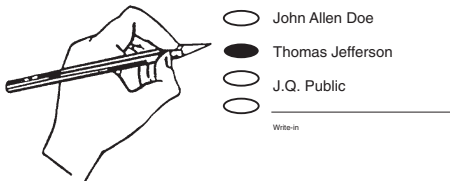
## YOU MAY USE A PENCIL OR PEN

At the Special Election of 2008 the voters of Jackson County will cast their votes on the ballot illustrated below. This page has been inserted into the Voters' Pamphlet as an aid for using this ballot.

1. **TO ENSURE YOUR VOTE COUNTS, COMPLETELY FILL IN THE OVAL (●) TO THE LEFT OF THE RESPONSE OF YOUR CHOICE.**

**EXAMPLE**

**PRESIDENT (VOTE FOR ONE)**



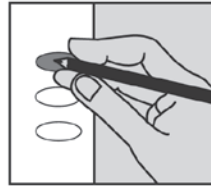
○ John Allen Doe  
● Thomas Jefferson  
○ J.Q. Public  
○ \_\_\_\_\_  
Write-in

2. **DO NOT CROSS OUT** — IF YOU CHANGE YOUR MIND, CONTACT THE ELECTIONS DEPARTMENT AT 774-6148 FOR A REPLACEMENT BALLOT.

**REMEMBER, IF STATED ON YOUR BALLOT, VOTE BOTH SIDES OF YOUR BALLOT!**

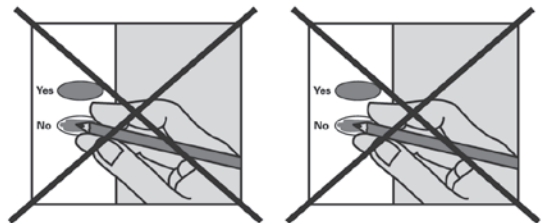
### check your ballot!

Make sure you have completely filled in the ovals next to your choices.



If you vote for more candidates than allowed, or if you vote **both Yes and No** on a measure, it is called an overvote.

Your vote **will not count** for that candidate or measure.



You do not have to vote on all contests. Those you do vote on will still count.

Contact Jackson County Elections to request a replacement ballot if:

- you make a mistake
- your ballot is damaged or spoiled
- your ballot is lost

or for any other reason.

#### **Jackson County Elections**

1101 W Main Street Suite 201  
Medford OR 97501

541 774 6148

[www.co.jackson.or.us](http://www.co.jackson.or.us)

### **OFFICIAL DROP SITE LOCATION OPENING FEBRUARY 23, 2008**

The drop site location listed below will be the only one used for the March 11th Special Election in Jackson County.

#### **Jackson County Elections**

1101 W. Main St., Suite 201  
Medford, OR 97501

Curbside ballot drop box open 24 hours daily (Left lane – W Main)

Elections office open 8 am to 4 pm (7 am - 8 pm on Election day)

**DEADLINE TO RECEIVE BALLOTS: 8 P.M. ELECTION DAY, MARCH 11, 2008**