

Jackson County Voters' Pamphlet

SPECIAL ELECTION
March 11, 2008



KINGS HIGHWAY WATER DISTRICT

Measure No. 15-83

BALLOT TITLE

15-83 TRANSFER OF KINGS HIGHWAY WATER DISTRICT TO CITY OF MEDFORD

QUESTION: Should the Kings Highway Water District Liquidate and Transfer the District and its' Service Responsibilities to the City of Medford?

SUMMARY: The City of Medford has annexed a substantial part of the area served by the Kings Highway Water District. Remaining District members have decreased over the past several months. Monthly income from the sale of water to diminishing members has resulted in insufficient revenue from the sale of water and services to its' members by the District to pay monthly expenses for the past several months. The Kings Highway Water District will be unable to continue operations and serve members within a very few months due to lack of funds. The Kings Highway Water District has signed an Agreement to dissolve, liquidate and transfer the District, its' assets and service responsibilities to the City of Medford, acting by and through its' Medford Water Commission. The City of Medford, acting by and through its' Medford Water Commission, has supplied water to the Kings Highway Water District for several years and the Agreement provides it will continue to supply water and necessary services to remaining members of the District.

EXPLANATORY STATEMENT

Due to annexations by the City of Medford of a substantial portion of the area served by the Kings Highway Water District revenues from the sale of water and services have decreased and income to the District has been insufficient to pay monthly expenses for the past several months. The City of Medford, acting by and through its' Medford Water Commission, has supplied water to the Kings Highway Water District and its' members for several years. The Kings Highway Water District has signed an Agreement with the City of Medford, acting by and through its' Medford Water Commission, for the Medford Water Commission to continue to supply water and services to the remaining member base of the Kings Highway Water District. The Agreement provides for the Kings Highway Water District to dissolve, liquidate and transfer assets and water service responsibilities to the City of Medford, acting by and through its' Medford Water Commission. The plan of dissolution, liquidation and transfer includes transfer of all assets of the District to the City of Medford including water mains, rights of way, fire hydrants and personal property of the District. The District has no outstanding indebtedness and owns no real property or interests in real property.

The plan of dissolution, liquidation and transfer is available for examination at the Office of the County Clerk, 1101 W. Main, Suite 201, Medford, OR 97501. Should the dissolution, liquidation and transfer not occur, within a very few months, revenues from the sale of water and water services will be insufficient to meet expenses and the District will be unable to continue operations. It is necessary dissolution, liquidation and transfer occur so remaining members of the District will be supplied water and water services by the City of Medford acting by and through its' Medford Water Commission.

(Information furnished by Alan Baker, Chairman, Kings Highway Water District.)

— CONTINUES, TURN PAGE —

VOTING INSTRUCTIONS

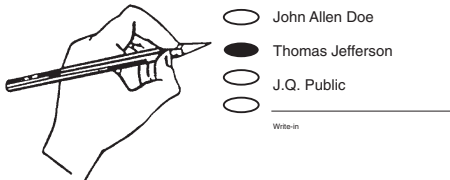
YOU MAY USE A PENCIL OR PEN

At the Special Election of 2008 the voters of Jackson County will cast their votes on the ballot illustrated below. This page has been inserted into the Voters' Pamphlet as an aid for using this ballot.

1. **TO ENSURE YOUR VOTE COUNTS, COMPLETELY FILL IN THE OVAL (●) TO THE LEFT OF THE RESPONSE OF YOUR CHOICE.**

EXAMPLE

PRESIDENT (VOTE FOR ONE)



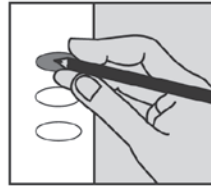
○ John Allen Doe
● Thomas Jefferson
○ J.Q. Public
○ Write-in _____

2. **DO NOT CROSS OUT — IF YOU CHANGE YOUR MIND, CONTACT THE ELECTIONS DEPARTMENT AT 774-6148 FOR A REPLACEMENT BALLOT.**

REMEMBER, IF STATED ON YOUR BALLOT, VOTE BOTH SIDES OF YOUR BALLOT!

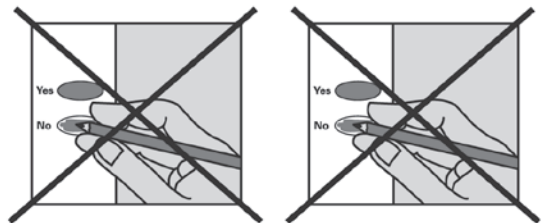
check your ballot!

Make sure you have completely filled in the ovals next to your choices.



If you vote for more candidates than allowed, or if you vote **both Yes and No** on a measure, it is called an overvote.

Your vote **will not count** for that candidate or measure.



You do not have to vote on all contests. Those you do vote on will still count.

Contact Jackson County Elections to request a replacement ballot if:

- you make a mistake
- your ballot is damaged or spoiled
- your ballot is lost

or for any other reason.

Jackson County Elections

1101 W Main Street Suite 201
Medford OR 97501

541 774 6148

www.co.jackson.or.us

OFFICIAL DROP SITE LOCATION

OPENING FEBRUARY 23, 2008

The drop site location listed below will be the only one used for the March 11th Special Election in Jackson County.

Jackson County Elections

1101 W. Main St., Suite 201

Medford, OR 97501

Curbside ballot drop box open 24 hours daily (Left lane – W Main)

Elections office open 8 am to 4 pm (7 am - 8 pm on Election day)

DEADLINE TO RECEIVE BALLOTS: 8 P.M. ELECTION DAY, MARCH 11, 2008