



# Jackson County Voters' Pamphlet

## SPECIAL ELECTION NOVEMBER 3, 2009

### ROGUE RIVER RURAL FIRE PROTECTION DISTRICT

### Measure No. 15-96

#### 15-96 FIVE YEAR LOCAL OPTION TAX

**QUESTION:** Shall the district continue imposing \$0.50 per \$1,000 of assessed value for general operation for five years beginning in 2011-2012?

This measure may cause property taxes to increase more than three percent.

**SUMMARY:** The passage of this measure will continue a current levy passed in November 2004. The current levy will expire at the end of 2010.

This proposed levy will maintain current levels of service for the Rogue River Rural Fire Protection District.

The proposed levy will provide the needed support to offset the inflationary cost of maintaining the current level of service enjoyed by district patrons.

It is estimated that the proposed tax will raise \$265,992 in 2011-2012; \$273,971 in 2012-2013; \$282,191 in 2013-2014; \$290,656 in 2014-2015 and \$299,376 in 2015-2016 for a total of \$1,412,186. The estimated tax cost for this measure is an ESTIMATE ONLY based on the best information available at the time of the estimate.

#### EXPLANATORY STATEMENT

This is not a new tax. This Local Option Tax will only become effective when the current Local Option Tax expires. With this, the Rogue River Rural Fire Protection District will be able to continue its current level of service. A five-year operating local option tax was first passed in November of 2000. It was renewed during November 2004. This tax has not increased, remaining at \$.50 per thousand since its inception. With the success of this Local Option, we will be able to:

- Maintain current fire and medical operations, and meet the increasing costs of required training, fuel, insurance, utilities and other required functions.
- Maintain the current number of staff.
- Continue to provide community services, such as blood pressure checks, community events and the Annual Open House.

Our permanent tax rate of \$1.9131 is not enough to maintain current services. This five-year operating Local Option Tax will allow the fire district to continue to provide the excellent service that the community has become accustomed to.

*(Information furnished by Ben Ramsey,  
Rogue River Rural Fire Protection District.)*

# VOTING INSTRUCTIONS

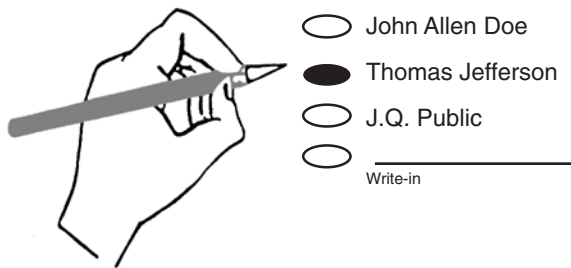
## USE A PEN (BLUE OR BLACK INK)

At the November 3, 2009 Special Election the voters of Jackson County will cast their votes on the ballot illustrated below. This page has been inserted into the Voters' Pamphlet as an aid for using this ballot.

1. **TO ENSURE YOUR VOTE COUNTS, COMPLETELY FILL IN THE OVAL (●) TO THE LEFT OF THE RESPONSE OF YOUR CHOICE.**
2. **TO WRITE IN A NAME — WRITE THE NAME ON THE SOLID LINE AND FILL IN THE OVAL (●) TO THE LEFT OF THE WRITE IN LINE.**

### EXAMPLE

#### PRESIDENT (VOTE FOR ONE)

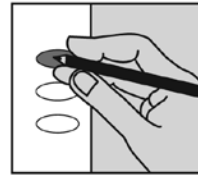


3. **DO NOT CROSS OUT — IF YOU CHANGE YOUR MIND, CONTACT THE ELECTIONS DEPARTMENT AT 774-6148 FOR A REPLACEMENT BALLOT.**

**REMEMBER, IF STATED ON YOUR BALLOT, VOTE BOTH SIDES OF YOUR BALLOT!**

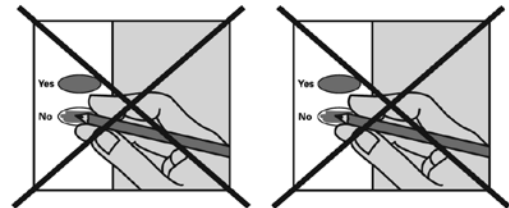
### check your ballot!

Make sure you have completely filled in the ovals next to your choices.



If you vote for more candidates than allowed, or if you vote **both** Yes **and** No on a measure, it is called an overvote.

Your vote **will not count** for that candidate or measure.



You do not have to vote on all contests. Those you do vote on will still count.

Contact Jackson County Elections to request a replacement ballot if:

- you make a mistake
- your ballot is damaged or spoiled
- your ballot is lost

or for any other reason.

#### Jackson County Elections

1101 W Main Street Suite 201  
Medford OR 97501

541 774 6148

[www.co.jackson.or.us](http://www.co.jackson.or.us)

## OFFICIAL DROP SITE LOCATIONS

Opening October 26, 2009

#### Jackson County Elections

1101 W. Main St., Suite 201  
Medford, OR 97501

Curbside ballot drop box open 24 hours daily  
(Left lane – W Main)

Elections office open 8 am to 4 pm  
(7 am - 8 pm on Election day)

#### Ashland Library

410 Siskiyou Blvd.  
Ashland, OR 97520

Curbside ballot drop box open 24 hours daily (alley off  
Gresham St. by book drop - opening October 26, 2009)  
Closes at 8 pm Election day

#### Rogue River City Hall

133 Broadway St.

Rogue River, OR 97537

Mon-Fri 9-12:30; 1:30-5:00

Election day – 9 am-12:30 pm; 1:30 pm-8 pm

**DEADLINE TO RECEIVE BALLOTS: 8 P.M. ELECTION DAY,  
NOVEMBER 3, 2009**